

ENABLING WORKFORCES TO MAKE EFFICIENT AND EFFECTIVE USE OF TECHNOLOGY AND DATA

to improve outcomes for people, families and carers.

**NEED FOR
SOCIAL CARE
IS RISING:**

1.9m

new requests

for social care support received
by councils in 2019-20



5m

people

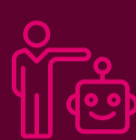
juggling caring responsibilities
with work and family life



THE BENEFITS OF USING TECHNOLOGY IN SOCIAL CARE:

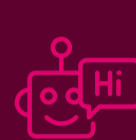
76%

76% of social care providers say that using technology leads to better outcomes for individuals



66%

66% said assistive technology frees up staff time to offer more meaningful support



YET DIGITAL APPROACHES TO SOCIAL CARE HAVE NOT YET BEEN WIDELY ADOPTED:

Only 11%

of social workers feel their initial training addresses their 'digital readiness' for the job

34%

of people supported by social care providers are unsure how to use assistive technology

How can technology be truly integrated into adult social care?

£40.5bn
contribution

Adult social care in England is estimated to contribute **£40.5 billion annually** to the economy



1.52m

people working in social care

There are a total of **1.62 million jobs** and **1.52 million people working** in social care in England with annual projections of jobs rising



ADASS & TSA COMMISSION WORKED WITH:

11

People, families and carers who access social care

14

Directors and assistant directors of adult social care

6

Front line care professionals

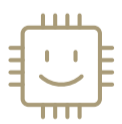
20

Leaders across local government, housing and health

5

Technology suppliers

OUR RECOMMENDATIONS



Technology enabled services need to be proactive and co-produced with people, their families and carers.



Digital infrastructure, skills and approaches in adult social care must improve so individuals and the care workforce can maximise digital opportunities.



People must own and control their health and social care data and enable access by the right people, at the right time.



More collaboration is needed in care and support across all levels, so services and policies are joined-up and contribute to the wider wellbeing of people, their families and carers.

Messages to central and local government



Data and digital must be at the forefront of government proposals for adult social care reform



People must be empowered to self-manage their health and wellbeing through technology, so they can stay independent and well in the homes and communities they love



Technology must be used preventatively so people with a need are identified and solutions put in place before they reach a crisis

Find out more at: TEcknowledgehub.co.uk/adass-tsa-comm