



InCommon

Bringing generations together



Sarena Shetty

Programme and Partnerships Lead at InCommon

Get in touch: sarena@incommon.org.uk



www.incommon.org.uk



[@incommonlondon](https://twitter.com/incommonlondon)

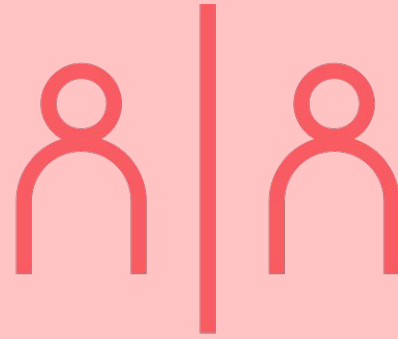


[@incommonuk](https://www.instagram.com/incommonuk)

The context



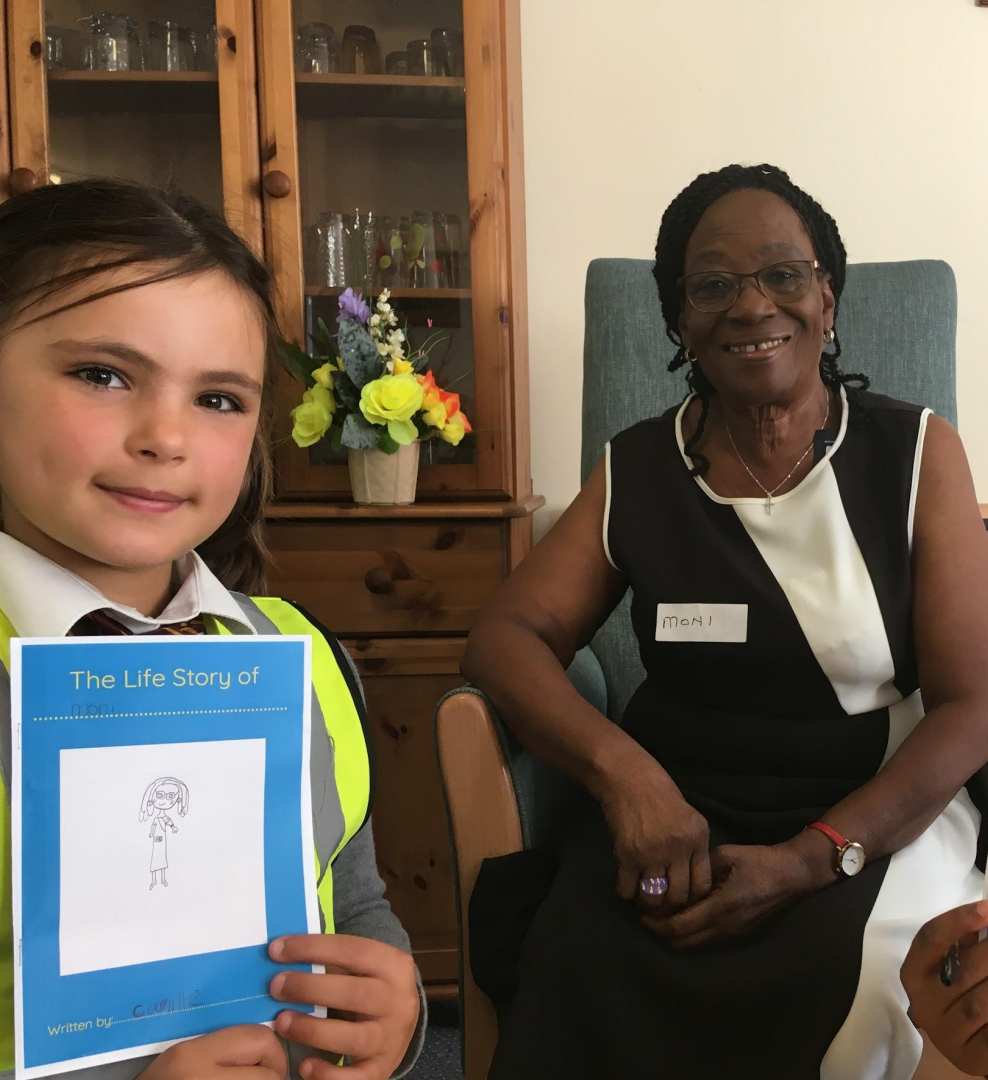
Ageism exacerbates age divides in communities



Age-segregated communities



The thing I have in mind



InCommon brings generations together to build more connected, inclusive and age-friendly communities.



It does improve my life. When you're an elderly person you spend a lot of time on your own. Speaking to children makes you think differently, it lifts you for a while.

“

PAT, OLDER VOLUNTEER

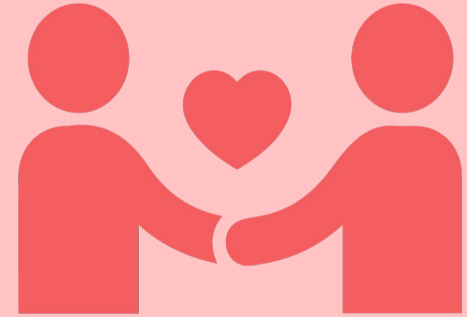
Key Learnings



Programme Design



Co-design



Relationship Building



If I didn't come here I wouldn't speak to anyone all day, apart from the TV. I love speaking with the children. They make me laugh.

“

OLDER VOLUNTEER



At first the residents were sort of



Mel Leung

Empower Programme Manager at InCommon

Get in touch: melissa@incommon.org.uk



www.incommon.org.uk



@incommonlondon

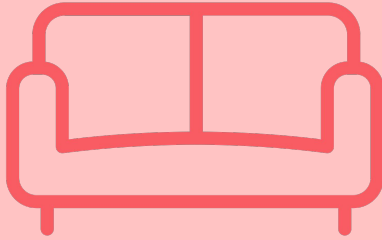


@incommonuk

Building on our tried and tested model



Location is key

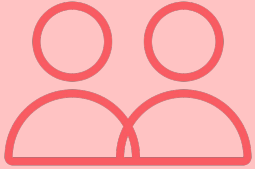


Accessibility matters



Relationship Building

Empower Programme



Matching



Support



Scheduling



Resources



Reporting

Platform Demo

“

Part of my role is to enable a sense of community here, but it can be a challenge with so many competing priorities. The online platform helps me to fulfil this part of my job description as it is very easy to use and keeps everything all in one place.

LIZA, INDEPENDENT LIVING SCHEME MANAGER, ORBIT GROUP

The initial video call and demo with Mel was beneficial, she explained really well how to use the platform. The design is so simple to use that I got the hang of it straight away. It makes enabling intergenerational activity a breeze!

RHIANNE, TEACHER, WISEWOOD COMMUNITY PRIMARY SCHOOL

”



It has helped create a stronger community at the scheme. The visit from the children encouraged residents to join the communal lounge and was one of the highest turnouts for a communal activity.

“

DEE, SCHEME MANAGER, HOUSING 21

Join an intergenerational movement



melissa@incommon.org.uk



www.incommon.org.uk



[@incommonlondon](https://twitter.com/incommonlondon)



[@incommonuk](https://www.instagram.com/incommonuk)